



Genesis Grounds 2020 Annual Report

Your Partners in Grime

Genesis Grounds 2020



1. Spring 2020 Non-Virtual Covid - Response Needs
2. New Initiatives
3. Events
 - a. Plant Swap
 - b. Fall Cleanup 2019
 - c. Planning

Gratitude - Thank you!

- a. Linda Annesley Stepping Down
- b. Genesis Staff & Vendors
- c. Adopt-a-Plotters
- d. Grounds Committee
- e. Volunteers

Spring - Pivot to Signup Genius Cleanup

Spring has come! When the skies clear, come spend some enjoyable hours outdoors in the sunshine - improving our gardens.

Signup Genius link - Take-a-Task. [Signup Genius link](#) ;

Thanks to those who have stepped up:

Charlotte Cowles, Linda Klimach, Annette Fisch, Jonathan Levine, Laura Wallace, Sarah Weiss, Phil Barr, Lisa Perschke, Karis Crawford, Paul Schwankl, MaryLu Barth, Kate Curtin, Anne Wasciuk, Eric Slosberg, Abbie Egberman

<https://www.signupgenius.com/go/10c0d4caeab23a6fa7-genesis2>

Needs:



We have several low commitment, one-off jobs which take just a bit of time. Helping with this would make a big difference in keeping the Genesis Grounds looking great. For example:

- **Weeding**
- **Mulching the east slope in the back parking lot**
- **Planting perennial ground cover in the back**
- **Giving a hand to an Adopt-a-Plotter on vacation**
- **Looking for shrub care vendorrrrrr**

Let someone on the committee know if you're available.

Needs:



Our Adopt-a-Plot group is aging (who isn't?)

- **We have a few plots in need of a new caregiver. It's one of the most satisfying and rewarding ways to spend a bit of time in the spring and summer. And think of the fun browsing the plant catalogs in the winter.**

Please help us identify someone who might be interested.

New Initiatives that get to the heart of our love of gardening

- Eliminating Herbicide Use
- Butterfly Garden and Certification
- Also: *Reviewing Options for Erosion Mitigation in grassy extension as you enter back parking lot*

Eliminating Herbicide Use



- Proposal
- Background -
 - Tension between
 - "We want to maintain a professional looking institution"
 - "Please stop exposing our children to chemicals"
 - Genesis Joins Washtenaw Environmental Excellence Partnership
 - The Partnership calls for minimizing or eliminating the use of chemical herbicides and fertilizers on the grounds.
- Unanimous Genesis Board Approval
- Letter to Congregants of Both Congregations -
 - Letter went out to both congregations Thu, Apr 9, 2020
 - Not a lot of responses, but those received have been positive.

Eliminating Herbicide Use (cont...)



- Implications: There will be more weeds - particularly dandelions in the lawn and weeds in the walkways and courtyard joints.
- Actions:
 - Working with A-1 Lawn Service on suspending chemical use on the grounds..
Discussed implications and alternatives including organic fertilizer and trimming.
 - Gardeners discontinued Preen in the beds and window wells.
 - Planted trial ground covers: Lily of the Valley and ferns - to outcompete weeds (shady, wet areas)
 - Organic fertilizer available to fortify plants in garden beds
 - Congregants can assist with
 - Picking the dandelion flowers. Pulling Garlic Mustard.
 - Weeding and trimming will have to be done to control weeds in courtyard and sidewalk cracks.

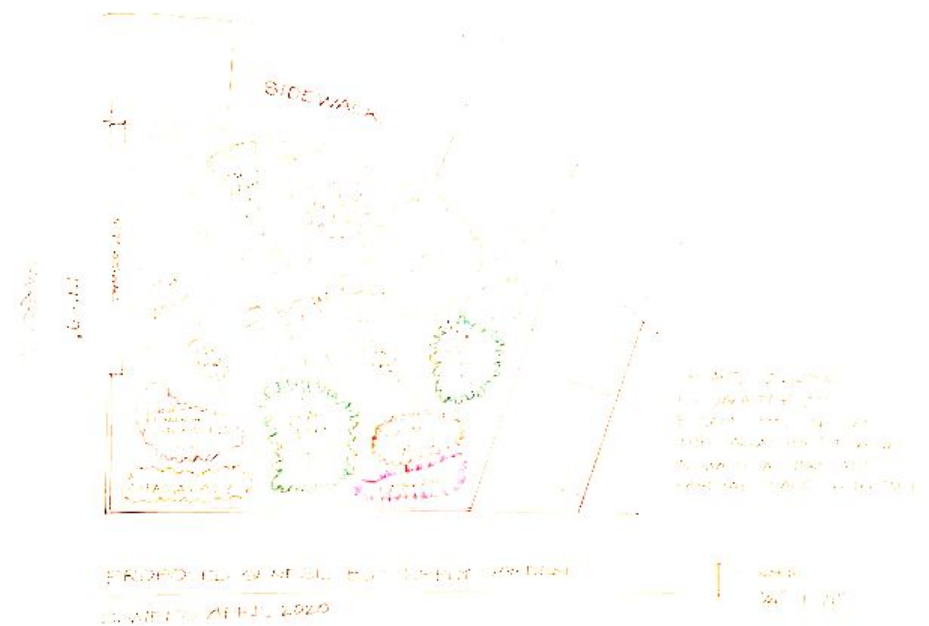


Weed control

- Tending beds
- Mowing
- Planting ground cover
- Veggie Gardening (looking for a champion)
- Encouraging selective native plants
- Landscape Fabric & Mulch
- Elbow Grease!!!

Butterfly Garden - Progress Report

- Design - Yeah Sarah!
- National Certification - Eric Slosberg
- Old landscape fabric and existing plants removed - Charlotte Cowles, Abbie Eggerman, Phil, Sarah
- Some Plants Ordered; Some will be grown from seed
- Asking congregants who have candidate plants to pot them for replanting



Courtyard in Bloom



Progressive flowering
from month to month

Pavers will require
additional weeding
without herbicides.



Butterfly Garden

STARTER SEEDS:

Some native seeds were planted in the fall in a 'nursery' bed behind the social hall. We're waiting to see what comes up.

PLANT LIST:

Bed off Eastover Parking: Butterfly Bush, Butterfly Weed, Milkweed, Lupine, Black Eyed Susan, Cone Flower, Shasta Daisy, Garden Phlox, Verbena, Sedum, Mapleleaf Viburnum, New Jersey Tea
Behind Social Hall - to augment native seeds: Bee Balm, Yarrow, Goldenrod, Sunflowers!



Ideas percolating:



Interactions with Security/Building Committees:

- There has been discussions about using large planters and strategic bench seating by the circle drive to inhibit a vehicle driving into the sanctuary.
- These could add both beauty and places to wait for elderly and disabled.

Erosion:

- We have been brainstorming about how to control the erosion and beautify the entrance to the back parking lot. This is also where compost bins are picked up by the city.
- Stay tuned.

Events



Grounds plant exchange Sun Sept 15th

If you have perennials in your garden that are ready to be divided - appropriate for the Genesis Campus or to swap with other gardeners, this is a great opportunity.

Help fill in our bald spots. Do you have ground cover plants to contribute that are not overly aggressive.

Fall Plant Exchange is a chance to meet other gardeners and fill in some spots on the Genesis Campus. Bring some plants from your garden or a plant sale. We need hardy plants can compete with the weeds, and will not become invasive. Hostas, sedum, succulents, daisies, black-eyed-susan, and ornamental garlic to name a few. In addition to enhancing the grounds, this is low commitment way to bring a few more folk into our gardening circle and share an interest in gardening. Contact any member of the grounds committee with questions.

Events



Fall Cleanup Oct 27th 1-4

Every year we ask congregants to celebrate spring & fall by spending a few hours tending to our shared space. Raking, trimming, spreading fresh compost and mulch are great exercise and a satisfying way to spend an afternoon in shared camaraderie. All Ages welcome. Come for the whole time or drop-in as it fits your schedule.

We lucked out with a beautiful day. Hats off to our wonderful volunteers who help us tuck our gardens in for the winter ...

Events



March 1st 2020.

Visiting the site of the
future Butterfly Garden

Following our planning
meeting.

nababutterfly.com

Spring awakening



Spring awakening

The flowers don't
listen to the news,

rather to the sun
and rain.

It's exciting to see the successive flowering, for a full season of beauty.

(except for the guy in the picture)





Have you checked out the Sanctuary pots?

We are fortunate to have a deep array of plant experts



<<Last Fall
and this
Spring ...
waiting to
see it
climb>>

Laura, still
working her
magic



Pulling into the circle from Eastover





Still diggin' it!



Thank You Linda



Linda Annesley has been a steady hand in the garden FOREVER. With Penny and Beyond. As she steps down from the committee this year we wish her well and extend our thanks for her commitment and gracious spirit.

You made it happen!!

We're part of something bigger



Herbal Remedies, Farmers Market

Stunning Water Garden
Festival Theatre, Stratford



State
Capital
Honolulu



Where is your favorite garden?



Wild Nutmeg, Lyon
Arboretum, Oahu



Suburbia, New Jersey

Relax
Explore
Create

Nourish
Heal
Connect

Return to the Garden



Grounds Committee



Committee: Phil Barr, Laura Wallace, Mary-Lu Barth, Eric Slosberg, Sarah Weiss

Co-Chairs: Sarah Weiss, Phil Barr

Honorary Lifetime Members: Penny Griffith, Linda Annesley -

We've coasted on all of their great planning and organization over many years. The notes and detailed labels have been invaluable. Thanks for so much!

They make it happen



Special thanks to Mike Wolf and the Genesis Staff. They help in ordering, receiving supplies, coordinating vendor contracts, emptying and filling the flower pots, advice, good will and help behind the scenes.

Our Vendors:

- Guardian Tree - Tree Fertilization (spring, fall)
- A-1 Lawn Service - Mowing, Fertilization

Our Core - the Adopt-a-Plotters

The dedicated Adopt-a-Plotters share their love of gardening and the grounds through their beautifully tended spaces. We have few meetings and they go about their business on their own time and at their own pace. So lovely and we so appreciate them!

Adopt-a-Plotters and Garden Generalists

Mary Lu Barth: South side of St Francis Chapel
Karis Crawford, Paul Schwankl: Courtyard
Kate Morris Curtin: Wisdom House
Barbara Frank: Circle Drive Garden
Claire Heidema: Raised bed by Courtyard
Linda Klimach, Kate : Wisdom House

Eric Slosberg: East of circle entrance
Laura Wallace: Sanctuary Entrance Flower Pots
Sue Miller: Raised circle bed and General grounds
Sarah Weiss, Charlotte Cowles, Eric Slosberg :
Butterfly Garden
Sarah Weiss, Phil Barr: General Grounds

Emeritus (please let me know past grounds adopt-a-plotters not mentioned)

Alice Sano, Emeritus
Penny Griffith, Linda Annesley Emeritus - Fearless Leaders
Anne Wascuik, Emeritus Adopt-A-Plotter - Circle Drive Garden

Our Volunteer List

- If you've been active this year, our profound gratitude. We hope you're getting pleasure from the activity.
- If we haven't seen you yet this year, there's a sunny day and a rake waiting for you.

Linda Annesley, Tom Annesley, Phil Barr, Mary Lu Barth, David Clifford, Charlotte Cowles, Karis Crawford, Kate Morris Curtin, Martha Daniels, Abbie Eggherman, Annette Fisch, Barbara Frank, Mary Lu Hayman, Joanne Heaton, Claire Heidema, Knut Hill, Rowen Hill, Ralph Katz, Herb Klimach, Linda Klimach, Tim Kowaleski, Jonathan Levine, Dan Long, Kay Long, Gitte Lozano, Steve Lozano, Eilleen McMyler, Sue Millard, Sue Miller, Bob Milstein, Christine Modey, Violet Neau, Sarah Noda, Roger Palay, Bill Parkus, Lisa Perschke, Jack Petersen, Margaret Petersen, Ruthann Petersen, Jennifer Potoff, Matt Potoff, Murray Rosenthal, Alice Sano, Paul Schwankl, Vera Schwankl, Ruth Scodel, Eric Slosberg, Mario Spivak, Nomi Spivak, Nancy Szabo, Nancy Szabo, Bill Teepen, Nancy Terry, Laura Wallace, Anne Wascuik, Sarah Weiss, Josh Whinston, Kettle Freedman-Doan, Joe Pollack, Jennifer Wolf

Thank You!!

Genesis Anniversary Paperbark Maple



This Tree Commemorates
The Shared Vision of the
Genesis Partner Congregations

By Daily Embracing
Mutual Trust and Respect
We Partner with God
and One Another
to Heal a Broken World

June 18, 2015

